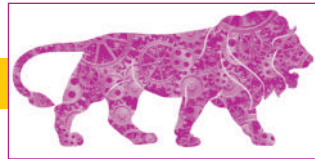




*Mechanisation & Automation in Construction
Safe Access, Seamless Performance*

Lift & Reach Equipment Customized Solutions for Reality & Industrial Infrastructure



Built to lift Built to last



ConMechAuto Consultants India Pvt. Ltd.,

CMAC :

Established by qualified and experienced professionals from infrastructure industry, we are providing wide range of men and material handling equipment with quality engineering for infrastructure fraternity.

We have strength of understanding customer needs depending on their projects, through consultancy, engineering studies and services with 19 plus years of manufacturing experience. CMAC offers total solution for material handling as per the project requirements. We provide manufacturing services for industrial steel structures.

VISION :

We aim to establish a reputation in the global market on the same lines as in India, by promoting mechanization in execution of projects with continual up gradation of technology. We help the client achieve their project targets in a safe and cost effective manner.

MISSION :

To achieve 4S-Sustainability, Saving, Safety and Speed for our client's projects through Value Engineering, Mechanization and Automation of the projects.

VALUES : We operate with these four values :

Timely commitment, Relationship, Respect and Team work.

QUALITY OBJECTIVES :

To ensure State of the art products, we involve ourselves right from design of product and manufacturing processes. We conduct PDI for all the products delivered on time from our own manufacturing facilities.

TRAINING :

We have a training division, which takes care of training the technicians and the equipment operators. This ensures optimum productivity for customer project's progress.

SERVICE EXCELLENCE :

We have Customer Relationship Manager - CRM's at 5 major regions of India. Each CRM is equipped with electrical & mechanical teams to ensure smooth operations of equipment. We implement periodical training and up-gradation of our service teams. Our centralised help desk for various products, helps resolving minor problems online, thus contributing for maximum output of equipment in a timely manner.

SPARE PARTS :

We have deployed a 6000 sqft. of dedicated warehouse at Hyderabad. 150 sqft. space at all the regional offices with critical Spare parts used for regular and periodical maintenance.

LEASING DIVISION :

Equipment's & Rentals, is the leading provider of rental equipment in India. We provide equipment that lifts & reaches. We rent these equipment, so that our customer can focus on what they do best rather than maintaining and servicing equipment.

RESEARCH & DEVELOPMENT WITH DESIGN TEAM :

To establish and adapt systems according to the client's specific requirements by using IoT and AI.

Management Team



Rambabu Cheruvu, Managing Director :

“We at CMAC believe in understanding customer requirements better and giving optimal solutions with best price and support”.

As a visionary, Rambabu is positioning CMAC at the apex of Indian and global arena to show case our capabilities for the said range of equipment. As a Technocrat, he has been associated with Manufacturing and Infra industry for the past 35+ years in delivering high-end engineering solutions to the industry. A man with a passion and principles, he is successful in transforming CMAC into innovative, Quality and Value driven organization.



Badarinath Cheruvu, Director - Technical and Sales :

MS in Mechanical Engineering from Drexel University and a post graduate in Transactional Analysis. Badari has an expertise in understanding customer requirements as application engineering is his forte. With 31 + years of process experience and global exposure in material handling, he is leading the organization in terms of business development and technical support. With this varied experience he stands as a strong support to the sales and the service team in realizing their potential thus ensuring organizational growth.



Jyotsna Cheruvu, Director - Operations & Training :

An Engineering graduate and a Behavioral Science Trainer, Jyotsna is ensuring effective and efficient operations for the entire company. She manages the entire after sales team on pan India basis and ensures customer support all the time. Her strength lies in providing process interventions leading to Organizational development. She is successful in creating Learning and Development platform for the organization by imparting training to the entire team.

Associate Directors



Bharat Bhanu Das
Management Consultant,
Associate Member of the Institute of
Cost Accountants of India



Bhuvanagiri Srinivasa Rao
Doctorate in Chemistry, Quality
and R&D Expert, NABL Assessor



Rajinder Raina
B.E (Mech) NIT Srinagar,
MBA (Marketing & Finance)



Chivukula Krishna Kishore
MBA (HR), Masters in Finance, LLB,
PGD (Training & Development), PGD (HR)

Passenger & Material Hoist

PMH: Is used in vertical Transportation of Man and Material during construction Phase, to enhance site productivity.



Curved Hoist for NDCT & Inclined hoist for Chimney



PM Hoist for Cable Stayed bridge



PM Hoist with Rebar Carrier



PM Hoist Double Cage



PM Hoist Single Cage



PM Hoist in Pump House

PM Hoist - Technical Specifications

Model	SC-100	SC-150	SC-200
Rated Load (kg)	1000	1500	2000
Safe Working Load (kg)	800	1200	1600
Rated Passengers (Nos)	13	17	20
Gear Motors with brake (KW)	1 x 11	2 x 7.5	2 x 11
Rated Lifting Speed (m/min)	0-30	0-30	0-30
Max Lifting Height (m)	80	200	200
Cage Dimension (m) (L x W x H-O/O)	2.2 x 1.5 x 2.4 (Cage Roof with Canopy)	2.7 x 1.5 x 2.4	3.0 x 1.5 x 2.4
Mast Section (mm) (L x W x H)	450 x 450 x 1508 (Triangle)	450 x 450 x 1508	450 x 450 x 1508
VFD-KW	15	22	30

Model	SC-250	SC-300	SC-350
Rated Load (kg)	2500	3000	3500
Safe Working Load (kg)	2000	2650	3000
Rated Passengers (Nos)	20	25	25
Gear Motors with break (KW)	2 x 15/26	3 x 15/26	3 x 15/26
Rated Lifting Speed (m/min)	0-54	0-54	0-54
Max Lifting Height (m)	400	400	400
Cage Dimension (m) (L x W x H-O/O)	3.2 x 1.5 x 2.4	4.0 x 1.7 x 2.4	4.0 x 1.7 x 2.4
Mast Section (mm) (L x W x H)	650 x 650 x 1508	650 x 650 x 1508	650 x 650 x 1508
VFD-KW	75	90	90
Note: SC 200 / 200, SC 250 / 250, SC 320 / 320 Twin Cage provided as per Site requirement.			

Optional Features:

- PLC and Floor Calling
- Floor Selector
- 12 Mtrs Horizontal Rebar Carrier
- Biometric
- Load Cell
- Regenerative VFD with 40 percent power savings
- Servo Stabilizer
- Busbar System

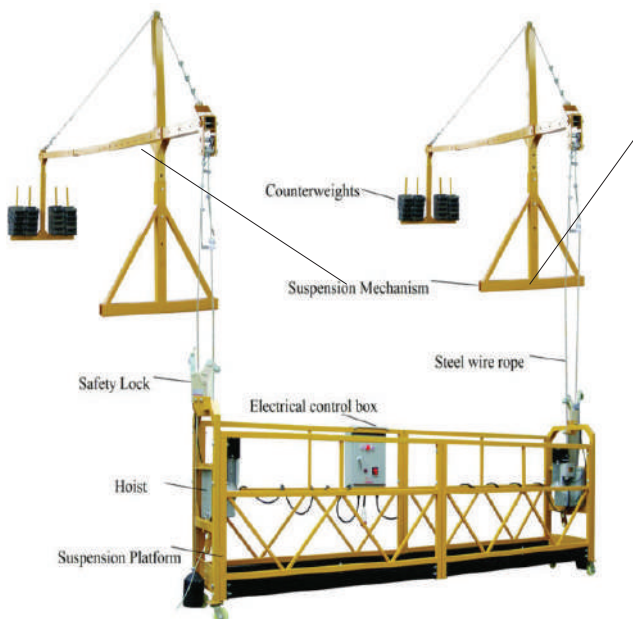
Electro Mechanical Safety - Features:

- Upper Limit Switch
- Trap Door Limit Switch
- Lower Limit Switch
- Over ride Limit Switch for Upper & Lower travel
- Emergency Stop Buttons (In Cage, Base Panel & In Cage roof operating Remote)
- Cage roof canopy
- Free fall arrestor / safety device with 5-years validity
- Electro MAGNETIC Brakes for Motors
- Heavy duty buffer springs placed on the base frame
- Anti-skid heavy duty Aluminium Chequered Floor Plate
- Motor guards
- Ground Enclosure
- Main Power Supply Switch

Suspended Rope Platform - Rectangular, Square, Circular & Double Decker

SRP is a twin hoist motor driven compact platform for use in restricted space areas.

- This temporarily installed suspended access equipment is multi-purpose and efficient construction machinery applicable to work at heights up to 200+ mtrs.
- It is also ideal for applications on: Elevator Shaft, big size tanks, high chimneys, vertical duct shaft, bridges, large dams, external plastering, painting and elevation works.



Suspended Rope Platform

Technical Data

Model	CMAC250	CMAC 800	CMAC1000	CMAC SPL 1000 DOUBLE DECKER	CMAC 2500 CIRCULAR
Rated Capacity (Kg)	250	800	1000	1000	1000
Rated Speed (M/min)	8~10	8~10	8~10	8~10	8~10
Rated Power (Kw)	1.8 X 1	1.8 X 2	2.2 X 2	2.2 X 2	2.2 X 6
Hoist Model	LTD8	LTD8	LTD10	LTD10	LTD10
Safety Lock Model	LSB30	LSB30	LSB30	LSB30	LSB30
Platform Dimension L x W x H (mm)	1000*1000*1460	7500*690*1460	7500*690*1460	Customized	Customized
Weight of Suspension Mechanism (Kg)	200	336	336	N / A	N / A
Counter-Weight (Kg)	500	1000	1200	N / A	N / A
Weight of Lifting Platform	Steel Platform (Kg)	350	600	680	Varies
	Aluminum Platform (Kg)	225	385	385	N / A



Vertical Duct Shaft at Kaleswaram

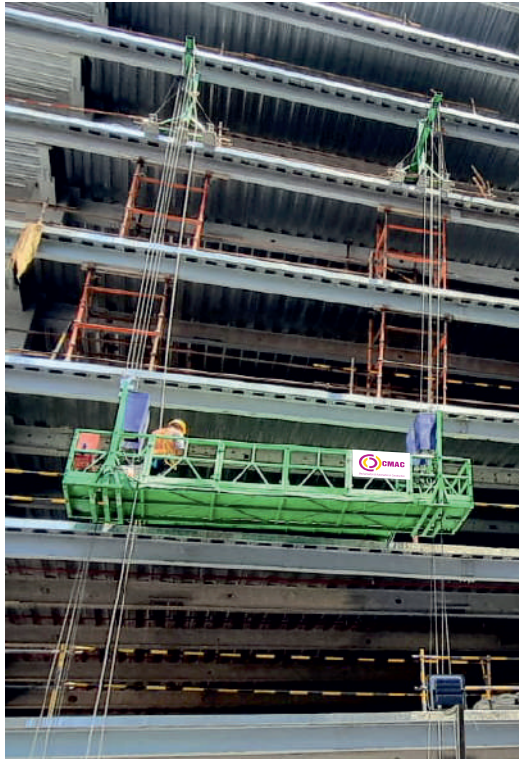


Chimney SRP



Special SRP

Special Purpose Equipments



Special SRP for Robo Acco Tech
(Hollow Core Concrete Wall Panels)



Access Suspended Platform
@ Vijayakeeladri Temple
Vijayawada, AP



Special Double Decker SRP
for Lift Shaft



Special SRP for Anti Corbonation Coating (ACC)
at Cable Stayed Bridge, Durgam Cheruvu, Hyderabad



Varying electro mechanical access platform
@ Vidyasagar Setu, Kolkata



Self Propelling Maintenance Platform @ 331 Meters Height Horizontal Travel (290 Meters, 70 Meters, 80 Meters)
Anji Khad River @ Jammu, First Cable -Stayed Railway Bridge in India

MFH: Is used in vertical Transportation of Material during construction Phase, to enhance site productivity.



Multi Functional Hoist (MFH)-CMAC Rambo with Rebar Carrier



Special Application-MFH



Standard-MFH
Multi Functional Hoist -110 mtrs

MULTI FUNCTIONAL HOIST (MFH)-CMAC RAMBO

TECHNICAL DATA

Multi Function Hoist	Rambo 1 Ton	Rambo 1.5 Ton
Gross Weight Capacity	1000 Kgs	1500 Kgs
Pay Load Capacity	750 Kgs	1250 Kgs
MOTOR		
Maximum Lifting Height	110 mtrs	110 mtrs
Make	LHP	LHP
Capacity	10 HP/7.5 KW	15 HP/11 KW
Trolley Speed	25 Mtrs/min	25 Mtrs/min
Voltage	415 VAC	415 VAC
Frequency	50 HZ	50 HZ
Protection	IP 55	IP 55
Duty	S1	S1
Gear Box	Helical in line	Helical in line
O/P rpm	68	68
BRAKE		
Make	Emco	Emco
Brake Coil Voltage	190 VDC	190 VDC
Bucket Size (L*W*H) (Ins/Ins)	1520 x 900 x 720 1440 x 820 x 650	1520 x 900 x 720 1440 x 820 x 650
Wire Rope	10 mm 6/19 Construction	12 mm 6/19 Construction
Wire Rope in drum	For 15 Mtrs height-65 Mtrs & for 25 Mtrs height-95 Mtrs	For 15 Mtrs height-65 Mtrs & for 25 Mtrs height-95 Mtrs
Mast Dimensions	(400 mm X 500 mm X 1500 mm)	(400 mm X 500 mm X 1500 mm)
Mast Angle	150 x 50 x 6mm Front & Rear	150 x 50 x 6mm Front & Rear
Safety Control	Up & Down limit switches, Mechanical Stopper	Up & Down limit switches, Mechanical Stopper
Top Mast with Pulley	1 No.	1 No.
Bottom Mast with Pulley	1 No.	1 No.
Channel Platform	Fabricated	Fabricated
Winch Dimensions - (O/O)	2200mm x 870mm x 750mm.	2200mm x 870mm x 750mm.
CONTROL PANEL & GROUND PANEL		
IP rating	Ip 55	Ip 55
Contactors	Schneider or equivalent	Schneider or equivalent
MCB	32 A 3 pole	32 A 3 pole
Overload relay	12-18 amps	18-22 amps
Hour Meter	Provided	Provided
Remote with 5 mtrs cable	Provided	Provided
Anchor interval	6 Mtrs	6 Mtrs
Optional Features	1. Special trolleys to carry various materials.(Plywood/Doors/Windows) etc. 2. VFD, PLC& Floor landing system 3. VFD Regenerative Drive 4. Load Cells 5. 6 Mtrs Horizontal Rebar carrier	



Geared Motor with Brake and Winch Mechanism

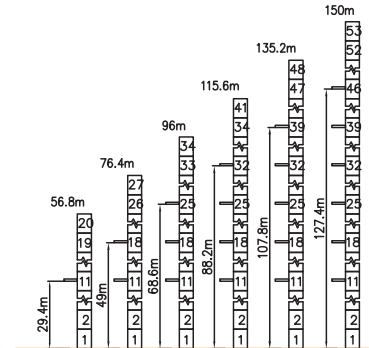
Tower Crane-5512

Load Diagrams

Jib m	rope t	Max Load m	MTRS																		
			18	19	20	21	22	23	24	25	31	37	43	49	55						
55	2.5	29.8	2.50														2.39	1.95	1.63	1.39	1.20
	5.0	15.7	4.31	4.07	3.85	3.64	3.46	3.29	3.14	3.00	2.34	1.90	1.58	1.34	1.15						
49	2.5	31.4	2.50														2.07	1.73	1.48		
	5.0	16.5	4.56	4.30	4.07	3.86	3.66	3.49	3.33	3.18	2.41	2.02	1.68	1.43							
43	2.5	32.1	2.50														2.12	1.78			
	5.0	16.9	4.67	4.41	4.17	3.95	3.75	3.57	3.41	3.26	2.55	2.07	1.73								
37	2.5	32.4	2.50														2.15				
	5.0	17.1	4.73	4.46	4.22	4.00	3.80	3.62	3.45	3.30	2.58	2.10									
31	2.5	32.1	2.50																		
	5.0	16.9	4.67	4.41	4.17	3.95	3.75	3.57	3.41	3.26	2.55										
25	2.5	31.9	2.50																		
	5.0	16.2	4.46	4.20	3.97	3.76	3.58	3.40	3.25	3.10											

Anchorage

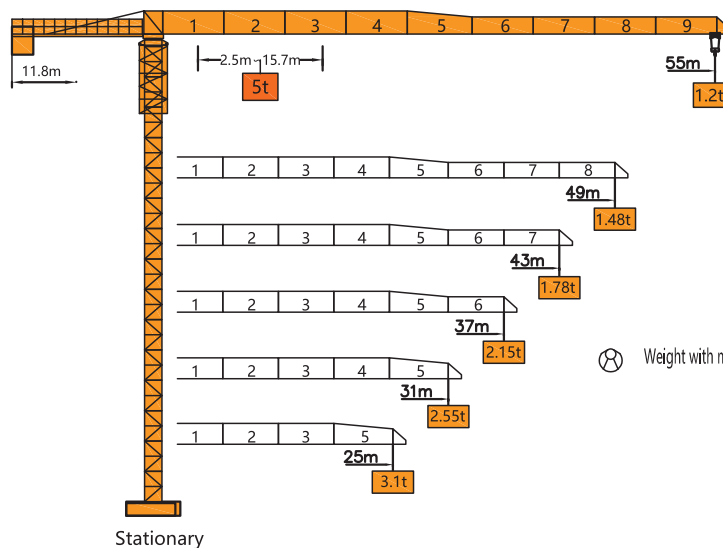
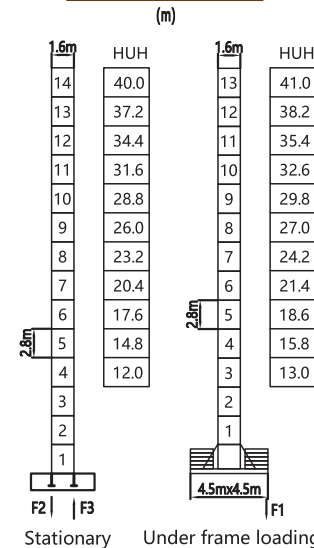
Tower crane standard section
1.6m*1.6m*2.8m



Specifications

Mechanisms	Indicators	Speed (m/min)	Hoist Weight (t)	Rope Capacity	Power
Hoisting	▲ ▼	0-9	2.5	320m	18kw
		0-35	2.5		
		0-70	1.25		
		0-4.5	5.0		
		0-17.5	5.0		
		0-35	2.5		
Trolleying	◀▶	0~40m/min		3.3kw	
Slewing	⊙	0~0.63r/min		2*3.7kw	
Main Supply				~380V(±10%) 50Hz	
Gross Power (Excluding climbing and travelling)				28.7Kw	

Tower



F2	68t	72t	F1	52t	63t
F3	50t	53t			
⊗	30t		⊗	34t	

● In Service ■ Out of Service

⊗ Weight with max free-standing height and max jib (without counter-weight and load)

Wide range of Tower Crane models available up to 25 tonnes lifting capacity.

CMAC Tower Crane 2510 & 1070



Technical Specifications of TC 2510 & 1070				
Sl. No.	Description	Unit	Parameters	Parameters
1	Model		2510	1070
2	Working Range	M	2.5~25	0.5-8.5
3	Max Lifting Capacity	kg	2500	1000
4	Tip Load	kg	1000	700
5	Jib Type		Flat Head	Hammer Head
6	Lifting Height	m	17.5 (Fixed)	10 (Fixed)
			150 (Internal Climbing)	90 (Internal Climbing)
7	Trolley	m/min	20-40	9.33
8	Slewing	r/min	0-0.67	0-09
9	Climbing	m/min	0.5	22
10	Standard section size (L x W x H)	m x m x m	1.05 x 1.05 x 3	550 x 550 x 1.25
11	Lifting mechanism	KW	11	3/4.5
12	Slewing mechanism	KW	2.2	1.5
13	Trolley Mechanism	KW	3.3/2.2	0.25
14	Total Power	KW	16.5	6.25
15	Maximum operating Wind speed (m/s)		10.8-13.8	
16	Operating Ambient temperature		-20°C - 40°C	

CMAC Tower cranes are Built for Strength, Designed for Performance

CMAC Tower Cranes are engineered to deliver superior lifting performance, with high safety standards, and reliable operation on demanding construction sites. Its strong structure and modern technology ensure smooth and efficient material handling at all working heights.

With its optimized jib design and precise control system, CMAC tower cranes provides excellent load stability, accurate operation, and improved productivity. Advanced safety features give operators greater confidence and ensure safe site operations.

The Tower Crane 2510 & 1070 is easy to erect, simple to operate, and built for long-term durability.

Designed for high-rise construction, these cranes can be raised up to a height of 150 & 90 meters, respectively making it suitable for residential, commercial, and infrastructure projects.

Wide range of Tower Crane models available up to 25 tonnes lifting capacity.

Scissor Lift

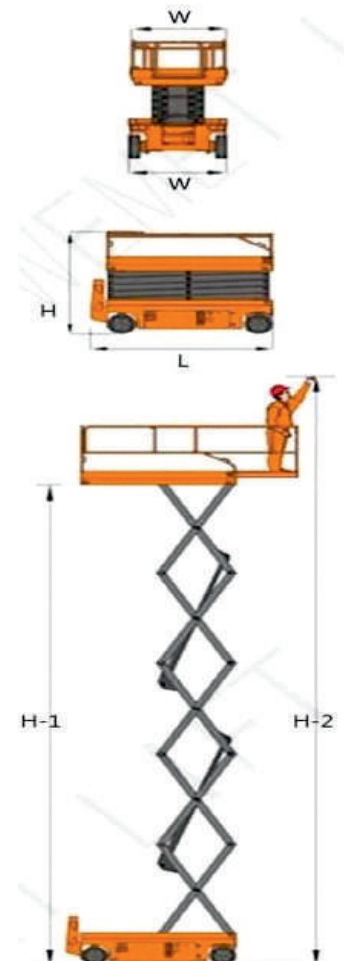


#Simply Elevated



Technical Specifications

	Self-Propelled Scissor Lift					Manual Scissor Lift
Specifications:						
Model	CMAC 08E (Narrow)	CMAC 08E	CMAC 10E	CMAC 12E	CMAC 14E	CMAC 14M
Maximum Reach-(Mtrs)	8	8	10	12	12	14
Maximum Platform Height – H1 (Mtrs)	6	6	8	10	14	12
Load capacity-(Kgs)	450	450	450	320	320	500
Platform Size (LxW) - (mm)	2260x810	2260x1130	2250x1130	2260x1130	2250x1130	2016x1000
Guardrail Height-(mm)	1100	1100	1100	1100	1360	1100
Overall Dimensions (LxWxH) - (mm)	2475x810x2158	2475x1150x2158	2470x1190x2290	2475x1150x2414	2470x1190x2560	2465x1360x1780
Wheel Base-(mm)	1900	1900	1900	1900	1900	1900
Ground Clearance-(mm)	100	100	100	100	100	100
Drive Force	Electric Hydraulic Transmissions	Electric Hydraulic Transmissions	Electric Hydraulic Transmissions	Electric Hydraulic Transmissions	Electric Hydraulic Transmissions	Electric Hydraulic Transmissions
Drive Motor- (kw)	24v/4.5	24v/4.5	24v/4.5	24v/4.5	24v/4.5	24v/4.5
Power Supply	6V/225Ah x 4 Battery	6V/225Ah x 4 Battery	6V/225Ah x 4 Battery	6V/225Ah x 4 Battery	6V/225Ah x 4 Battery	6V X 4/ 225Ah
Lifting/Descending Speed	3-5 m/min	3-5 m/min	3-5 m/min	3-5 m/min	3-5 m/min	3-5 m/min
Drive Speed (Lowered/elevated) - (Km/h)	3.5/0.8	3.5/0.8	3.5/0.8	3.5/0.8	3.5/0.8	3.5/0.8
Non-Marking Solid Tired-(mm)	Dia 381 x 127	Dia 381 x 127	Dia 381 x 127	Dia 381 x 127	Dia 590 x 190	Dia 381 x 127
Machine Weight-(Kgs)	1850	2060	2208	2430	3390	2100



IN HOUSE PRODUCTION FACILITY & INFRASTRUCTURE



STOCK READY FOR DISPATCH



SPARE PARTS INVENTORY



QUALITY & SAFETY IS OUR PRIORITY



Pre Delivery Inspection

Quality team shall carry out thorough inspection of the equipment in accordance with design standards, by using our TEST BED facilities. It is mandatory to carry design load to prove the operation of the equipment and related safety features before delivering the equipment to our customer.

CSR ACTIVITY

We are creating employment for school drop outs by providing hands on training on our equipments. This initiative is free of cost under CSR and we rolled out about 650+ operation technicians and they got employed at various construction companies across India.

Leasing Division : We are the leading provider of rental equipment in India. We provide equipment that lifts & reaches. We rent these equipment, so that our customers can focus on what they do best rather than maintaining and servicing equipment, which they may use for a specific project. We make sure the equipment is there when it needs to be and is ready to work immediately and efficiently.

Leasing Division was founded in 2009, which is a distinct part of CMAC, with a view to capitalize on the enormous opportunity presented by the infrastructure equipment rental services industry in India. The Company focuses on providing turnkey solutions to EPC companies and assists its business divisions into 3 distinct segments:

- a) Pooling of equipment for rentals of the above range.
- b) Procuring assets to service specific large infrastructure projects.
- c) Buying of used equipment as is condition to refurbish & put it to use.
- d) Guiding the client to identify the specific equipment which may help them complete their project faster.

Equipment profile & the specifics

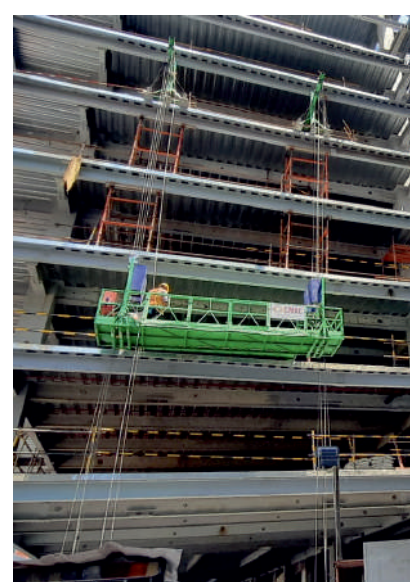
Passenger & Material Hoist	48+
Suspended Rope Platforms	20+
MFH	04+



PM Hoist Single Cage



MFH



SRP

Appreciation Letters from few of our Clientele



RUSTOMJEE REALTY PVT. LTD.
(SUBSIDIARY OF KEYSTONE REALTORS PVT. LTD.)

To whom so ever it may concern

This is to certify that the following equipments were supplied by M/s. ConMech Auto Consultants India Pvt Ltd Hyd.,

Passenger & material hoist (Regular) 1 tone Capacity (Model SC.100)

The above machines have been installed in various places in our sites in a phase wise manner. Our orders with CMAC have always been shipped in a timely manner. These machines are commissioned with due training to our operators and technicians on maintenance and operational procedures. These machines are being used extensively and we are pleased with the performance of these machines. We are extremely happy with (M/s. ConMech Auto Consultants India Pvt. Ltd.) CMAC's service back up.

The entire CMAC team is very co-operative in providing solutions and technical assistance in a timely manner. We sincerely wish them

"ALL THE BEST"

Authorized signatory

M/s. Rustomjee Realty Pvt Ltd.

Corporate Office : 702, NATRAL, M. V Road Junction, Western Express Highway, Andheri (West), Mumbai - 400 059, India.
Tel : +91 - 22 - 667 56 888 Fax : +91 - 22 - 667 99 999 E-mail: conshome@rustomjee.com Website: www.rustomjee.com



Anrak Aluminium Limited

TO WHOM SO EVER IT MAY CONCERN

This is to certify that the Passenger and material hoist is supplied by M/s Con Mech Auto Consultants India Pvt Ltd., Hyderabad.

The said Hoist is installed at our Alumina Refinery Works (Anrak Aluminium Limited), APIIC Industrial Park, G Koduru Village, Makavarapalem Mandal, Visakhapatnam District.

The delivery was within the scheduled time. The machine was commissioned by trained persons and technicians.

The machine is being used extensively and regularly and we are pleased with the performance.

We are satisfied with the support and services offered by M/s Con Mech Auto Consultants India Pvt Ltd.

The entire team is cooperative in providing solutions and technical assistance.

We wish them ALL the best.

For ANRAK ALUMINIUM LIMITED


D. RAMAKRISHNA
VICE PRESIDENT - COMMERCIAL

Regd. Office: APIIC Industrial park, G.Koduru Village, Makavarapalem Mandal, Visakhapatnam Dist. - 531 113, A.P. Ph: +91 893227900
Corporate office: Plot No. 703, Srinivastan Colony, Road No. 3, Banjara Hills, Hyderabad 500 024, Telangana, India, Tel: +91-40-4696 3450
Website: www.anrakaluminium.in CN:0749996P20079.035278

K. Raheja Corp Private Limited



To whom so ever it may concern

This is to certify that the following equipments were supplied by M/s. ConMech Auto Consultants India Pvt Ltd Hyd.,

- 1) Passenger & material hoist (Regular) 1.6 tonne Capacity (Model SC.160)
- 2) Suspended Rope Platform (Model : SRP - 800)

The above machines have been installed in various places in our sites in a phase wise manner. Our orders with CMAC have always been shipped in a timely manner. These machines are commissioned with due training to our operators and technicians on maintenance and operational procedures. These machines are being used extensively and we are pleased with the performance of these machines. We are extremely happy with (M/s. ConMech Auto Consultants India Pvt. Ltd.) CMAC's service back up.

The entire CMAC team is very co-operative in providing solutions and technical assistance in a timely manner.

Authorized signatory

M/s. K. Raheja Corp Pvt Ltd.

Regd. Off. : Plot No. C-30, Block 'U', Opp. SIDBI, Bandra Kurla Complex, Bandra (E), Mumbai-400 051.
Phone : 91-22-2626 4000
Fax : 91-22-2626 4004
E-mail : k.rahejacorp@vsnl.com
Website : www.krahejacorp.com



Megha Engineering & Infrastructures Ltd.

An ISO 9001-2015 Company
S-2, Technocon Ind. Estate, Balanagar, Hyderabad-500037, Telangana, INDIA
Tel: +91-40-44326700 Fax: +91-40-44326800
E-mail: info@meil.in Visit us: www.meil.in UASJ02TG2009PLC050271


To whom so ever it may concern

This is to certify that ConMechAuto Consultant India Pvt Ltd has contributed in an innovative manner by understanding our site needs from concept to commissioning of the equipments.

They commissioned special circular Suspended Rope Platform to access 120 meters vertical Duct shaft, deep into the ground. This has resulted in providing safety, speed and a cost effective solution for transporting men and material at our Kaleshwaram lift irrigation scheme package -11.

We wish all the best for their future innovative products.

Best Regards,


B Uma Maheswara Reddy
Vice President-Projects
Megha Engineering and Infrastructures Ltd
Balanagar Hyderabad

FEW OF OUR SATISFIED CLIENTS



Head Office:

ConMechAuto Consultants India Pvt Ltd.

1-3-183/40/19, 2nd Floor, SBI Colony, Gandhi Nagar, HYDERABAD - 500 080

Phone: 91-40-2754 1464, Email: sales@cmac.co.in

Works 1: Plot # 217/1, Sector 3, Phase 2, IDA, Cherlapally, Hyderabad-500 051,
Phone : 040-27261465

Works 2: Plot No. 17/B Phase V, IDA-Cherlapally, Hyderabad 500 051

Works 3: Plot No.138, Chandanvelly Village, Shabad, RR Dist., TS 509 217

Branches

Central: Vizag, Vijayawada, Anantapur, Tirupati, Nagpur, Indore, Bhopal, Jabalpur, Raipur, Nanded, Latur.

West: Shop No. S-03, Ripplez Mall, Plot No.6A, Acharya Vinobha Bhawe Rd, Sec-8, Sec-7, Arioli, Navi Mumbai, Maharashtra-400708. Pune, Sangli, Satara, Kholapur, Sholapur, Ahmedabad, Surat, Bhavnagar, Rajkot, Gandhinagar, Baroda, Hamath Nagar.

North: No.03-UG-07 (Upper Ground Floor, Ansal Plaza, Sector-1, Vaishali, Ghaziabad (U.P.) – 201010 India. Jaipur, Punjab, Rajasthan, Bihar, Varanasi.

South: Chennai, Erode, Salem, Madurai, Bengaluru, Mysore, Mangalore, Udupi.

East: West Bengal: Kolkata, Siliguri, Durgapur, Odisha: Bhubaneshwar, Puri, Assam: Guwahati.

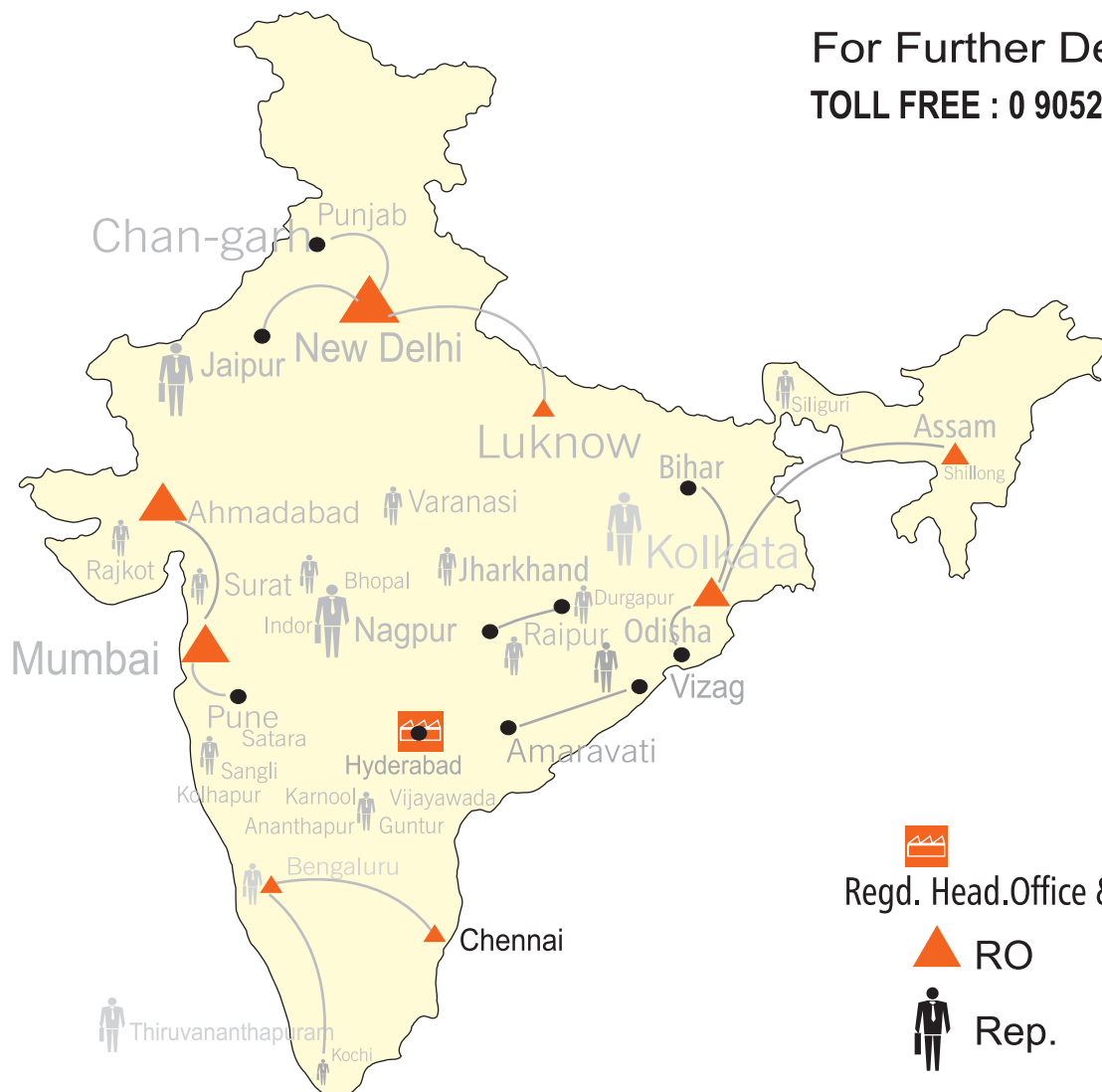
Website: www.cmac.co.in

Team CMAC

Design Team	6
Sales & Marketing	35
Production Team	70
Quality Team	7
Purchase and Dispatch	8
HR and Admin	3
Accounts	10
Service Managers	9
Service Technicians	70
Operation Technicians	60
Total	278+

For Further Details:

TOLL FREE : 0 90521 11464



Our Product Range



Tower Crane



Passenger & Material Hoist (PMH)



Multi Functional Hoist (MFH)



Suspended Rope Platform (SRP)



Scissor Lift

Our Products

- ❖ Passenger & Material Hoist
- ❖ Multi Functional / Material Hoist
- ❖ Curved Hoist
- ❖ Suspended Rope Platform (SRP)
- ❖ Circular Platform for Chimney / Ducts
- ❖ Lift Shaft Platform
- ❖ Special SRP for Bridges / Carriage Way Finishing Works
- ❖ Tower Crane
- ❖ Scissors Lift



Mechanisation & Automation in Construction
Safe Access, Seamless Performance
ISO 9001:2015 & CE

ConMechAuto Consultants India Pvt Ltd.,

Head Office: # 1-3-183/40/19, 2nd Floor, SBI Colony,
Gandhi Nagar, Hyderabad-500 080, India.

Sales: Tel. No.: +91-40-2754 1464, Mobile: +91-93931 11464

Work-1: Plot # 217/1, Sector 3, Phase 2, IDA, Cherlapally, Hyderabad-500 051.

Work-2: Plot No.17/B, Phase V, Cherlapally, Hyderabad, Telangana-500 051.
Plot No.17/C, Phase V, IDA Charlapalli, Hyderabad, Medchal Malkajgiri,
Telangana-500 051.

Work-3: Plot No.138, 0, Chandanvelly Village, IP Chandanvelly, Shabad,
Rangareddy, Telangana-509 217.

Email: sales@cmac.co.in, www.cmac.co.in